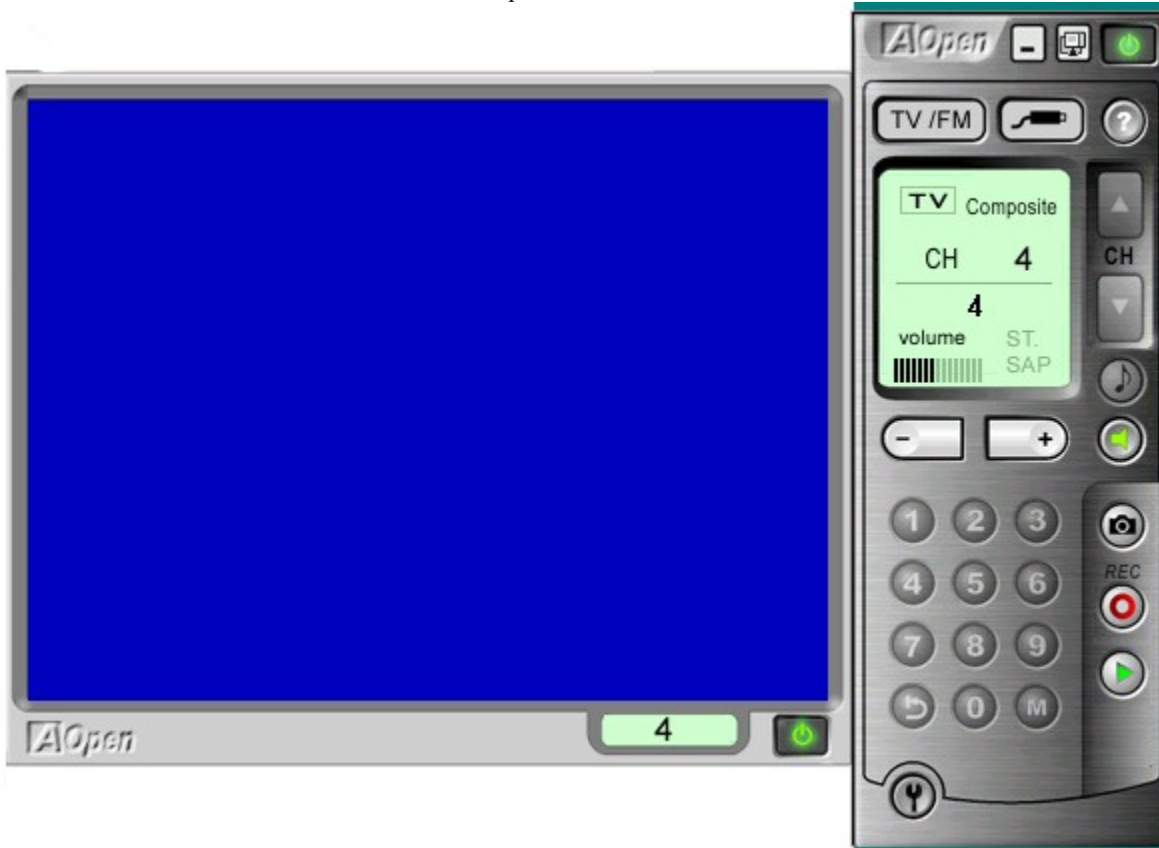


Table of Contents

User Interface

User Interface

Please click on buttons below for function descriptions.



[Return to Table of Contents](#)

Minimize

Minimize the Window

Always on Top

Allow Video Window to be on top of all other applications

Close the UI

Close the Utility Interface

FM/TV mode shift

Change the mode of FM or TV by clicking

TV/AV/SVHS mode shift

Change the mode of TV/AV/SVHS by clicking

Help

On-line help menu

Channel Up and Down

Get previous or next channel

MTS

For bilingual language selection

Volume Down

Turn down the volume

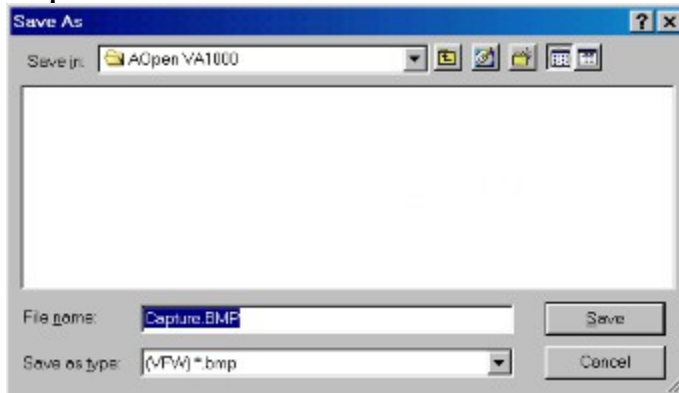
Volume Up

Turn Up the volume

Mute

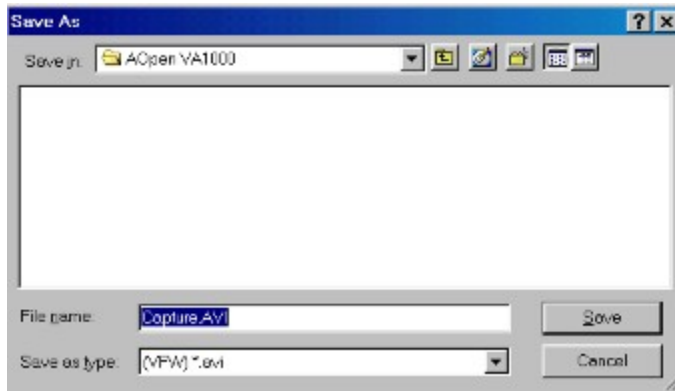
Mute the sound

Snapshot



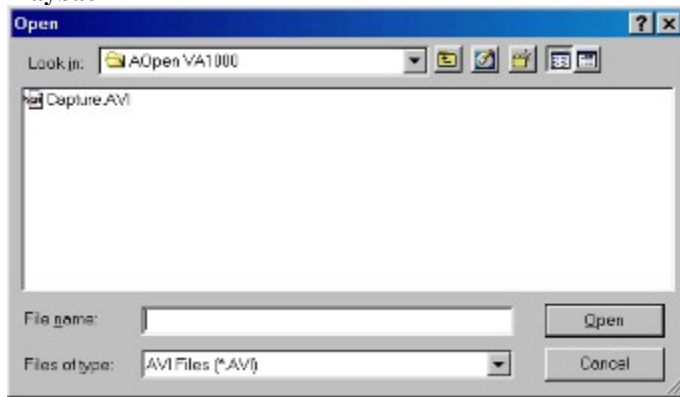
To capture a still image and save as BMP file format

Record



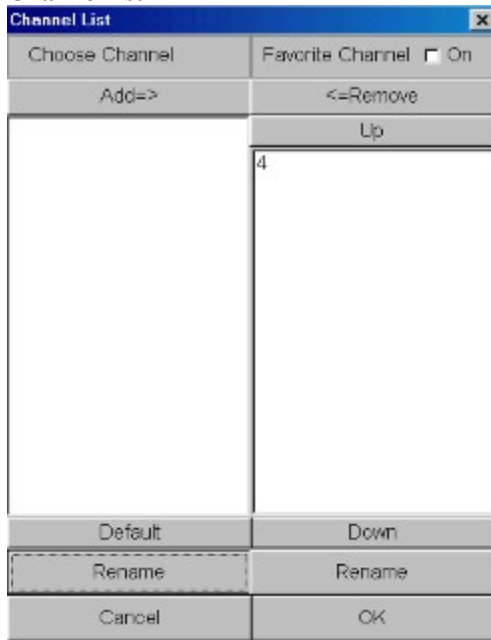
While you click record button, you will see the figure on the left. If you want to save it, just click button “**Save**”. If you want to stop capturing, push the button of “**Esc**” key on your keyboard to do so

Playback



Open the file you saved in the previous step and you would play and see what you get

Channel list



After you seek the channels, all channels will be listed on the Choose Channel.

Rename

Select any channel you like. Click **Rename** and enter any name you like.

Favorite Channel

If you just prefer some of the channels scanned, you can use this function. Check **On** and select the channels you prefer to add to **Favorite Channel**. Also, you can change the order of the channels.

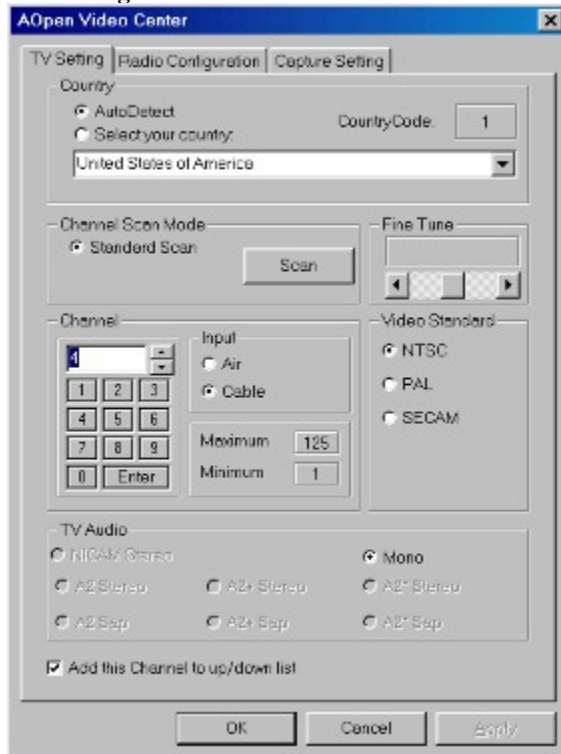
Jump

Press this button to get previous channel

TV/Radio/Capture Setting

„« TV Setting„« Radio Configuration„« Capture Setting

TV Setting



1.Country: Select the TV system of your country.

2.Channel Scan Mode: Click the **Scan** to seek the channels

3.Fine Tune: As you watch TV, you can use the Find Tune to do adjustment.

4.Channel: Select TV channel.

5.Input:Select the TV input

6.Video Standard: Select the TV standard system.

7.TV Audio: TV Audio is based on the Video Standard you select.

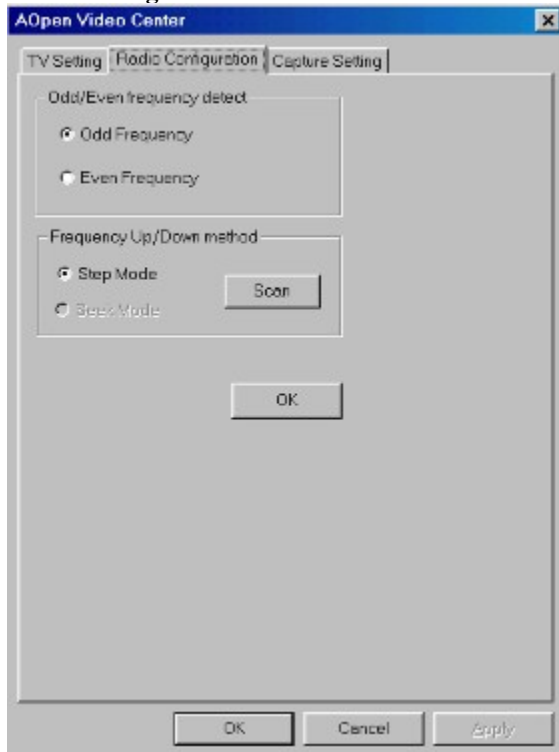
As you finish the option selection, just click **OK**.

[Go back to previous page](#)

[Go back to User Interface](#)

[Return to Table of Contents](#)

Radio Configuration



Odd/Even frequency detect

Odd or Even frequency to detect FM station is based on your country system. For example, 92.1, 96.5, etc. which are underlined mean odd frequency while 92.2 96.4 mean even frequency.

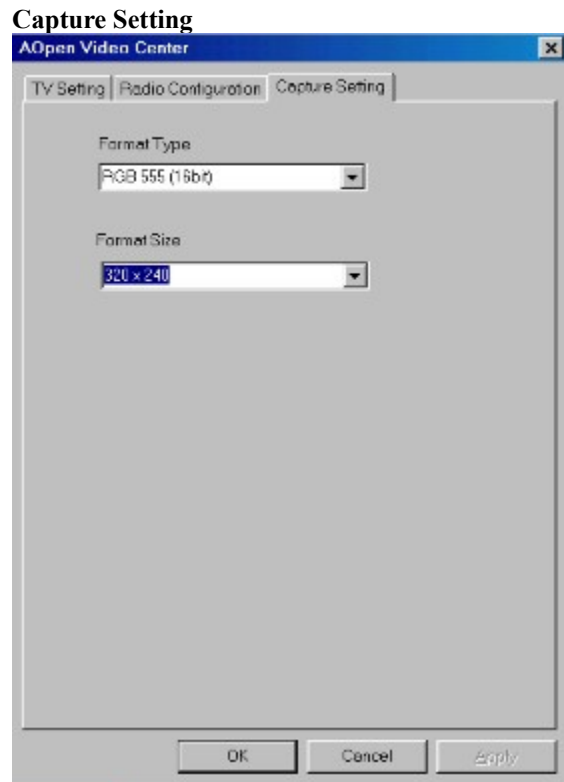
Frequency Up/Down method

1. Select the Step Mode and click the Scan button to search the radio channels.
2. After the search, the configuration will automatically set up the status in Seek Mode. Then click OK to continue.

[Go back to previous page](#)

[Go back to User Interface](#)

[Return to Table of Contents](#)



Capture Setting

Format Type

To set the capture file video format.

Format Size

To set the capture file size(Recommend Output Size in 320X240).

[Go back to previous page](#)

[Go back to User Interface](#)

[Return to Table of Contents](#)

